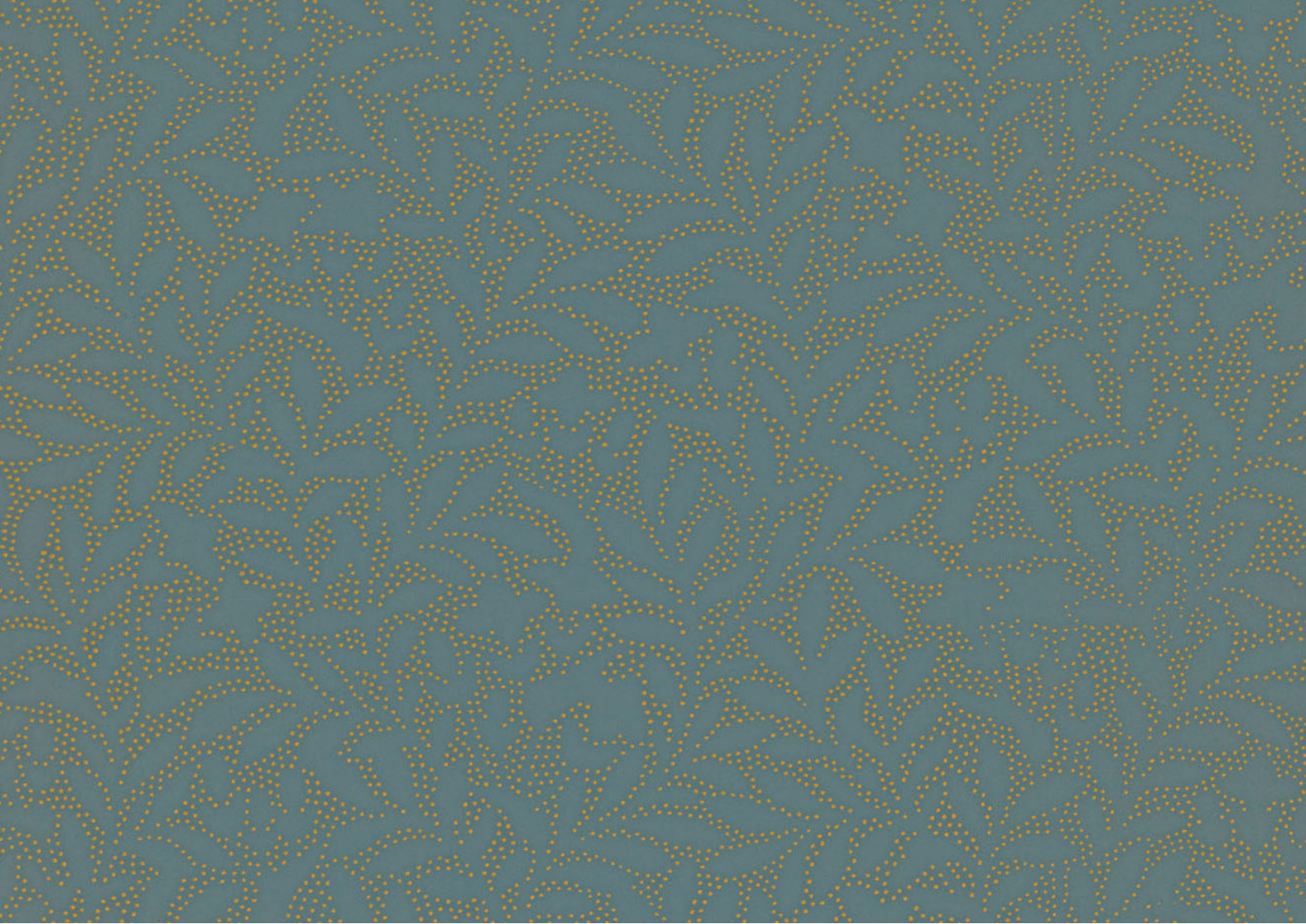




Jasmine Dot



Old Paradise Collection
Design Name: Jasmine Dot
Product Code: OPJAD05

Pattern Repeat: 60.5cm=approx 23.75ins
Roll Dimensions: W-53cm=approx 21ins / L-Per Linear Metre

Print Method: Digital
Substrate: Non-Woven

Hanging Instructions available on request.

History: circa. 1830
Developed from the original Jasmine Design. Fragments discovered during the restoration of Cyfarthfa Castle S. Wales. This Grade II listed museum property was built in one year 1824/25 for William Crawshay.

Alternative colourways:



OPJAD06



OPJAD08



OPJAD09

To request a sample, please contact us:
T: + 44 (0) 20 8940 4850
E: info@hamiltonweston.com
www.hamiltonweston.com



Jasmine Dot

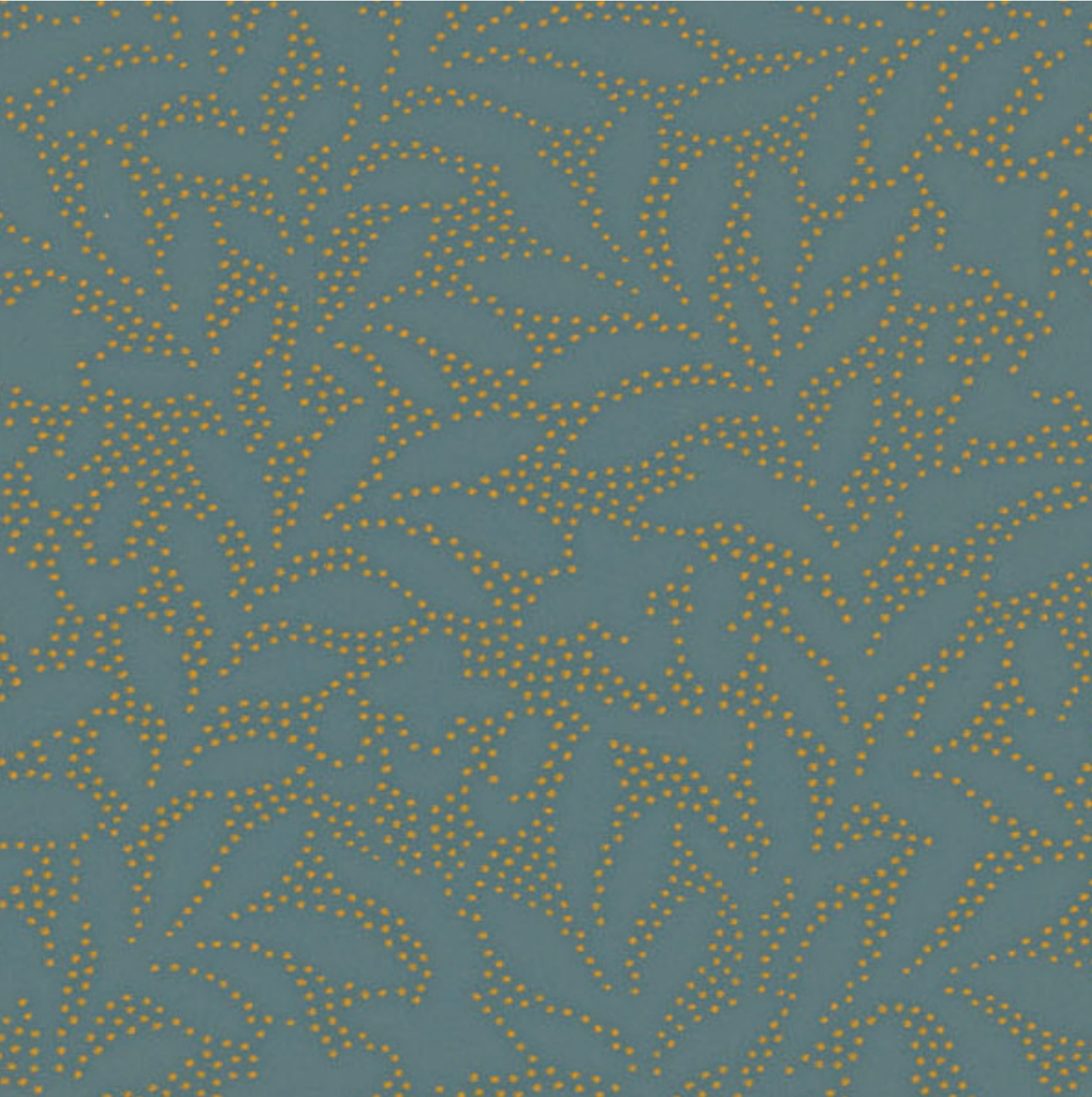


Image to scale

T: + 44 (0) 20 8940 4850
E: info@hamiltonweston.com
www.hamiltonweston.com